



CULTURA DE LAS MONTAÑAS

<http://eastmountainhistory.org>

EAST MOUNTAIN HISTORICAL SOCIETY Newsletter

Double Issue
First and Second Quarter 2015

“Mapping Our Vanishing Past”



**You're Invited! Be Among the First
To View Our Historical Society Map**

Plus:

Scholar To Talk About Area *Genizaros*

All Are Invited to **June 14** Public Event

Story on Page 2

During last September's East Mountain Celebration, members of the public helped the map committee with ideas for places to include in the project. (From left are EMHS members Rick Holben, Bev Neville and Denise Tessier. Helping us is Patsy Garcia, at right.)

Photo by Becky Schnelker

2015 Calendar of Events - all events at 2 p.m. on Sundays at the Historic Church

June 14 – “Mapping Our Vanishing Past” Map Unveiling. EMHS will present to the public the map we've created after months of research into communities no longer on modern maps. **Moises Gonzales**, who has published research on *genizaros*, will give a presentation. *Story on page 2.*

August 23 – “Rerouting Route 66 Through Tijeras Canyon.” Public presentation by **Roger Zimmerman**, president of the Albuquerque Historical Society. Mark your calendars to attend this event.

November 8 – EMHS Annual Meeting, Elections and presentation on **New Mexico DNA Project** by Angel R. Cervantes.

Community Invited To Be First To View Unique Map of ‘Our Vanishing Past’

The East Mountain Historical Society on June 14 will unveil the result of its “Mapping Our Vanishing Past” project: a map of East Mountain villages and places that no longer appear on present-day maps. All EMHS members and the public are invited to the event, which also will feature a talk by University of New Mexico assistant professor Moises Gonzales about *genizaro* settlements in New Mexico, including the East Mountain villages of Carnuel and Chimal.

The activities begin at 2 p.m. Sunday, June 14, in the little historic church west of the library in Tijeras. The event is free and refreshments will be served.

“Mapping Our Vanishing Past” was created over the past eight months by a volunteer committee of historical society members, incorporating input from local members of the community.

Led by Vice President Kris Thacher, committee members have researched towns and places on numerous maps, online databases, in libraries, via interviews and in the field. The EM Historical Society is printing the map in large exhibit format thanks to a \$1,000 Nina Otero-Warren Institutional Grant from the Historical Society of New Mexico. This durable exhibit map will be available for future display at schools, community centers, senior centers, and local events.

Historical Society President Denise Tessier said the idea for the map project came while members were interviewing long-time residents for the group’s award-winning “Great People, Great Stories” oral history project, which was launched in 2011 in anticipation of the state’s Centennial. “People were telling us where they had lived and we realized we hadn’t heard of some of these places before, such as Uña de Gato (‘cat’s claw,’ northwest of La Madera).”

Photos of more than 60 East Mountain residents and former residents who shared oral histories or other information with the EMHS will be included as part of the map unveiling. The towns they lived in are marked in a distinguishing color on the map.

The photos include all of the people who have formally shared histories with the East Mountain Historical Society since its founding in 1992. This includes early histories now housed at the Center for Southwest Research through the efforts of EMHS co-founder Joyce Mendel, along with those conducted during the more recent Great People, Great Stories and Sandia Mountain Legacy oral history projects.

EMHS launched the map project last year at the East Mountain Celebration in Tijeras, where it hosted a table and asked local residents to mark on a hand-drawn paper map any places they remembered that no longer exist or do not appear on maps.



Ciria Gonzales, who was interviewed by EMHS for an oral history, spent part of her youth in Uña de Gato.

Photo by Denise Tessier

Continued on Page 3

Map Unveiling . . .

Continued from Page 2

The exhibit-quality map that will be unveiled June 14 also includes post office sites, springs, railroad beds, stagecoach routes, Civil War trails, and numerous other historic landmarks.

Kris Thacher, Rick Holben and committee members discovered so much information in creating the map that we have decided our next big EMHS project will be creation of a companion book about the places on the map. A small version of the map would be included in the book.

The EMHS board has also discussed doing a travel-size or poster-size version of the map, which could be sold as a fund-raising project.

More than a dozen EMHS members worked with Kris Thacher on the map committee, most notably **Rick Holben**, as well as **Gus Garcia**, **Marge Larsen** (who made initial drawings of the map), **Anabel Sanchez**, **Sandra Lee**, **Marie Herrera Dresser**, **Margaret Garcia**, **Andre Larroque**, **Becky Schnelker**, **Denise Tessier** and **Joyce Mendel**. **Kathy Rich** offered technical advice on photos and graphics and came up with the idea to create the map as a portable banner.



The EMHS map committee (left), hard at work at one of its early meetings last October.

Photo by Kris Thacher

Scholar Moises Gonzales To Speak at Map Unveiling About Importance, History of *Genizaros*

UNM Assistant Professor Moises Gonzales will give a presentation during our June 14 map unveiling explaining the importance of *genizaros* in New Mexico and East Mountain history.

According to his scholarly article “The *Genizaro* Land Grant Settlements of New Mexico,” (Winter 2014 *Journal of the Southwest*), *genizaros* were North American Indians of mixed tribal derivation having Christian and Spanish names from their masters, speaking Spanish and living among the Spanish population in towns and ranchos and serving as a buffer for the frontier villages of New Spain against nomadic tribes such as the Comanche, Apache, and Navajo.

Continued on Page 4

Genizaros . . .

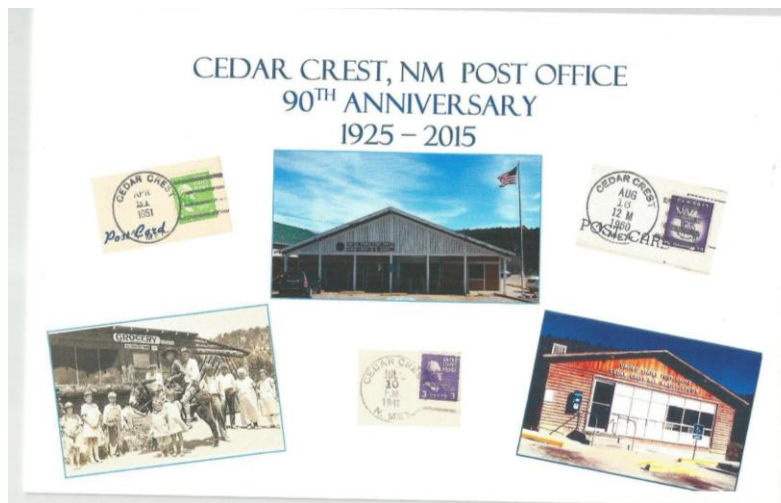
Continued from Page 3

As an example, he writes, *San Miguel de Lored de Carnué* was established in 1763 at the mouth of Tijeras Canyon “to serve as a protective settlement east of the Villa de Albuquerque.” Nearly half of the settlers of Carnue were *genizaros*, he says. “Similar to previously established *genizaro* settlements, the Carnué land grant was planned for settlement in a location that proved difficult to defend since the canyon is located at the entrance pass from the Plains into the middle Rio Grande valley, which was in the migration corridor of the Plains Apache, Kiowa, and Comanche tribes.”

He explains the motivation for living in such a dangerous settlement: “For *genizaros*, as well as *mestizos*, establishing buffer settlements was a way to become a landowner and gain social status, and escape the domination and servitude by the Spanish ruling caste.” Gonzales’ presentation to the East Mountain Historical Society is made possible by a McCune Foundation grant.

Cedar Crest Post Office Celebrates 90th Year

On March 1, the Post Office in Cedar Crest celebrated its 90th anniversary, so the East Mountain Historical Society sent a card, created especially for the occasion by members **Rick Holben** and **Kris Thacher**. Holben, who provided the pictures (below), said it had been 90 years since Carl Webb, founder of the town of Cedar Crest, got the charter for the post office.



Inside, the card reads: “*Congratulations! You’ve made your mark on history!*” It was signed by members of the EMHS board.

Jan Chavez, who has been at the post office 38 years, accepted the commemorative card on behalf of the office. Along with the card, Thacher gave Chavez a chocolate cake, as it also was Chavez’s birthday.

East Mountain Historical Society

MEMBERSHIP FORM

(Membership year is from January 1 through December 31)

Please use this form and mail it with your dues to the address below.

NAME _____ DATE _____

ADDRESS _____ ZIP _____

TELEPHONE _____ E-MAIL _____

ANNUAL DUES (please check appropriate line):

Student (\$10) _____ Individual (\$15) _____ Family (\$20) _____

Sponsor (\$25) _____ Corporation (\$50) _____

Donation/Amount _____

Does your employer match your charitable donations?

Please remember EMHS in your giving.

Honorary members (residents of the area more than 50 years) do not pay dues.

Dues are tax deductible to the extent allowed by law.

Make checks payable to:

East Mountain Historical Society, P.O. Box 106, Tijeras, NM 87059

Have you renewed for 2015?

Please join us and support our efforts. You may also join online and pay by credit card/PayPal by visiting our website at eastmountainhistory.org.

EMHS Weighs In on Cell Tower Construction Proposal

In February, members of the East Mountain Historical Society board visited the proposed site of a new 85' "monopine" cell tower installation near Cooper Road off North NM 14 and met with adjacent homeowner Ron Sorley.

After reviewing some of the information presented to Bernalillo County and documentation within historical society archives, the board sent a letter to the Bernalillo County Commission outlining its observations, including that:

- The cell tower could be considered "out of character" with 19th century buildings in the area, shown as the community of Los Angeles on an 1893 Carnuel Land Grant map.
- A section of the *Acequia Madre de San Antonio* (Mother Ditch) runs very near the projected location of the future cell tower pad, raising questions as to whether the historic ditch could possibly be damaged in the construction.
- In light of the East Mountain Historical Society's mission, which includes preservation of historic landscapes and "view-sheds" in the area, the appearance of the "monopine" (a cell tower made to resemble a pine tree) could be a strange sight that would detract from the overall character of the view. EMHS strongly recommended that the federal and state agencies responsible for monitoring the qualitative state of scenic byways in New Mexico be contacted for their input.

Preservation Chairman **Andre Larroque** drafted the letter, which was reviewed and approved by the EMHS board. The cell tower eventually was approved by the County.

East Mountain Historical Society
Newsletter

Published Quarterly

Denise Tessier.....Writer/Editor
newsletter@eastmountainhistory.org

The EMHS Newsletter aims to inform members and prospective members of EMHS events and endeavors, including committee work, and to serve as a record of society activities. It is also a forum for stories about the area. Please send your ideas or stories for future newsletters to the Editor, P.O. Box 379, Cedar Crest, NM 87008, or by email: newsletter@eastmountainhistory.org Deadlines for future issues of the newsletter are July 31, Oct. 31, Jan. 31, and April 30. All stories by Denise Tessier unless noted otherwise.

Mission Statement

The Mission of the East Mountain Historical Society is to identify, preserve and present to the public the history and culture of the East Mountain area. EMHS will assist in protecting historical buildings and landscapes, artifacts, records, or any item considered to be of historical significance. EMHS will also identify, collect and archive historical material of significance to the area.

Copyright 2015©

News and Notes . . . of the EM Historical Society

Welcome to our newest members:
Raymond and Janet Heath of
Albuquerque, **Karen Griffin** of Cedar
Crest, and **Dianne Layden** of Albuquerque.



Our heartfelt condolences go to EMHS Secretary **Bev Neville** on the loss of her husband **Bill Neville**, affectionately known as the “the camel man,” who died April 14. Bev and Bill moved west from the East Coast soon after their marriage in 1968 and Bill, an Air Force veteran and veterinary technician, spent 12 years working at the Denver Zoo. Bill started his own elephant ride company in 1981, then in 1984 switched to camels, a favorite attraction at the Albuquerque Zoo from 1986 to 2010. Bill and Bev moved to the East Mountains in 1999 and brought camels with them, to the delight of anyone who visited their home during the annual Fiber Farm and Studio tour. Bill attended many of our EMHS events and will be missed.



The Genealogical Society of Hispanic America is holding its annual conference June 5-7 at the Drury Plaza Hotel in Santa Fe. This year’s theme is *Mujeres Memorables del Mundo Hispano* (Memorable Women of the Hispanic World). For more information, visit GSHA’s Facebook page or its web site at www.gsha.net.



At our annual general membership meeting in November, members approved the election of President **Denise Tessier**, Vice President **Kris Thacher**, Treasurer **Sandra Lee**, and Secretary **Beverly Neville** for 2015.

Voted in as EMHS directors for a one-year term were **Anabel Sanchez**, **Margaret Garcia**, **Andre Larroque**, **Becky Schnelker**, **Anne Dacey-Lucas**, **Marie Herrera Dresser**, **Rick Holben**, **Kathy Rich**, **Gerry Jones** and **Gerry Garcia**. [Author Anne Hillerman](#) and photographer Don Strel honored us with a slide presentation after the elections.



The East Mountain Historical Society shared a table with the Jewish Historical Society at the state history conference in Albuquerque May 7-9. **Becky Schnelker**, **Margaret Garcia**, **Anabel Sanchez** and **Denise Tessier** talked to the many people who stopped to ask about our group, passing out brochures and past newsletters and selling our publications, including the “History of Forest Park Resort”, “History of Tijeras” and Chris Wilson’s archeological survey.

During the conference, EMHS President **Denise Tessier** also was one of the presenters, talking about her research on the “History of Valencia County Courthouses.” Thanks to EMHS member **Dianne Layden**, who filled in when the table minders took breaks.



Thanks to **Becky Schelker** for hosting our December potluck at her lovely home.

More News, Notes . . .

The East Mountain Historical Society is one of several groups involved in planning for the future of Carlito Springs Open Space, which is managed by Bernalillo County. We have agreed to help with history-related matters and emphasized to the county the importance of having the space protected by a caretaker. **Becky Schnelker**, a master naturalist who volunteers regularly at the site, is our liaison.



At the request of East Mountain High School history teacher **Michael Jamison**, EMHS board members **Rick Holben** and **Denise Tessier** on May 13 talked to several students about the history of the village of Cedro and nearby Sabino Canyon. Meeting in Cedro at the historic home of Autumn Pearson, we showed the freshmen and sophomores maps and photographs of the area and then walked with them to visit the Cedro Cemetery.



Cipriano Vigil, friend of EMHS who led us in a program of traditional music in 1999, has been honored with the Ralph Emerson Twitchell Award for his book, “New Mexican Folk Music: Treasures of a People” (UNM Press). He received the award at the Historical Society of New Mexico conference in Albuquerque for “an outstanding publication or significant

contribution . . . to the creative arts, as related to New Mexico history.”



We are sad to report the death of EMHS friend and supporter **Bill Baxter**, who led our 2010 field trip to the Ortiz Mountains Educational Preserve. Baxter devoted years studying and preserving the Galisteo Basin and Cerrillos Hills. [According to the Santa Fe New Mexican](#), Baxter “created a 14,000-page public database of information about the history of Cerrillos, which he compiled by talking to people and painstakingly poring over more than 100 years of newspaper articles. The database has a permanent home at www.cerrillosnewmexico.com and allows people to search for ancestors who lived in the area by name.” He was the author of several books, including *Gold and the Ortiz Mine Grant: A New Mexico History and Reference Guide*. Baxter died in January after a long illness.



EMHS President **Denise Tessier** (far left) was honored as an “Outstanding Citizen”

during the East Mountain Celebration in September. Commissioner Wayne Johnson (at right) presented the award.

Photo by Becky Schnelker

EMHS has moved! The East Mountain Historical Society now holds its monthly board meetings in the historic church in Tijeras, just west of the library, usually on the second Saturday of the month from 10 a.m. to noon. All members are welcome to attend our board meetings. Check our [website](#) to confirm dates and times.

2015 East Mountain Fiesta Schedule, Holy Child Parish

June 12 and 13 ~ San Antonio Mission Church in **San Antonio**

August 7 and 8 ~ San Juan Nepomuceno Church in **Chilili**

August 14 and 15 ~ San Lorenzo Mission Church in **Cañoncito**

September 11 and 12 ~ Nuestro Señor de Mapimi Mission Church in **San Antonito**

September 25 and 26 ~ Holy Child Mission Church in **Carnuel**, Fiesta of San Miguel

Talk by Co-Founder Louise Waldron Launches 2015 Programs



Louise Waldron, center, with her father, mother and baby brother, from the book “We Were Prisoners, Too.”

EMHS launched its 2015 public program series March 15 with a presentation by society co-founder Louise Waldron, who talked about the extraordinary roles played by her father, Lewis Korn, during World War II.

Korn, who had already made his mark in New Mexico as director of the U.S. Soil Conservation Service and as an archeologist working at such sites as Bandelier, was the

reluctant director of a Japanese internment camp in Arizona. He later went to Italy and coordinated the release of Jewish camp survivors to Palestine and to

Oswego, New York. The Oswego refugees were the only group of Jews allowed entrance into the U.S. at that time.

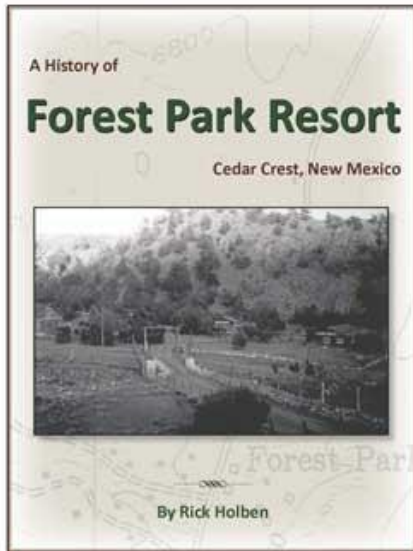
Waldron, who chronicled her father’s war years in her book, “We Were Prisoners, Too,” brought to the presentation exhibit-size maps and historic pictures from the book, which is available online [through Amazon](#).

Photo by Kris Thacher



"A History of Forest Park Resort"

By Rick Holben on sale now!



"This project started for me almost 40 years ago – I just didn't know it until the summer of 2013." – Rick Holben



Curious about who had owned the license plate he found along Highway 14 in the vicinity of Forest Park as a child, Rick Holben started a journey of historical research that led to the publication of this 40-page spiral-bound book, printed in color, now available at the Triangle Grocery or via our online store at eastmountainhistory.org. Cost is \$20.

The Forest Park book and other EMHS publications also will be available at all EMHS public events, including the June 14 map unveiling. Cost of "Forest Park" is \$15 at the event.

All proceeds benefit the East Mountain Historical Society.

East Mountain Historical Society
P.O. Box 106
Tijeras, NM 87059